

**Subscribe to The Community News**

# **THE COMMUNITY NEWS**

---

---

---

**Serving Aledo • the Annettas • Hudson Oaks • Willow Park, Texas**

---

---

---

## ANALYSIS

# New districts divide up Parker County

By **Randy Keck**  
The Community News

When the Texas Legislature met for its third special session on Sept. 20, one of the items on its plate was to re-draw the lines that define various representative districts based on new population numbers from the 2020 census.

Population shifts in the country led to Texas gaining two additional seats in the U.S. House of Representatives.

While nothing is ever a totally done deal until a judge somewhere says it is, this analysis will look at the districts as drawn and passed by the Texas Legislature.

The Mexican American Legal Defense and Educational Fund has filed suit saying the districts discriminate against Latino voters.

Texas gained four million new residents since the last census in 2010. According to the Texas Tribune, 95% of that increase was people of color; half were Hispanic.

The plaintiffs contend the new state representative map “drops the number of districts in which Hispanics make up the majority of eligible voters from 33 to 30. The congressional map reduces the number of districts with a Hispanic voting majority from eight to seven.”

Pending the results of the lawsuits, Parker County will see major changes in the way it is represented in the U.S. House of Representatives, the Texas State Senate, and to a lesser extent, the Texas House of Representatives.

State Rep. Phil King (R-Weatherford) told The Community News that drawing district lines can be daunting, because all the districts have to be roughly equal in population.

He explained that a state senate or congressional district in a state with vast areas of low-population almost has to draw population from the urban centers to provide the head count that is needed.

“We went to great lengths to keep communities of interest together,” King said.

## State House

Starting with the most local, Parker County currently sits in Texas House District 61, represented by Phil King (R-Weatherford). Geographically, the district comprises the entirety of Parker and Wise Counties.

In the new district alignment, Parker County will sit in House District 60, which encompasses Parker, Palo Pinto, and Stephens Counties.

The current District 60 representative is Glenn Rogers, who will face challengers in the 2022 Republican primary (see The Community News, Oct. 22, 2021).

## State Senate

That one was easy. The Texas Senate gets a little more complicated.

Currently, Parker County is in State Senate District 30, which comprises 12 full counties and two partial counties stretching from Erath County in the south to Wichita County in the north. The SD 30 incumbent is Drew Springer (R-Muenster).

Under the new map, Parker County will become part of two different state senate districts, SD 30 and SD 10.

The new SD 30 takes a hunk of Parker County, and then skips around Wise County to take in Jack, Young, Archer, Clay, Montague, Cooke, Grayson, and portions of Denton, Collin, and Wichita Counties.

Barbara Powell (D-Burleson) represents SD 10, currently a South Tarrant County district. Under the new map, SD 10 will take the other hunk of Parker County and Johnson, Stephens, Palo Pinto, Shackelford, Callahan, and Brown Counties.

Phil King has announced that he will challenge Powell for the seat.

Drilling down, the new SD 10 will take in most of Aledo, about the southern two-thirds of Annetta, Annetta South, about a third of Annetta North, the southern half of Hudson Oaks, a small corner of Willow Park, and portions of Weatherford.

The new SD 30 will take in most of Willow Park and the remaining fractions listed above.

## U.S. House

For Congress, Parker County is currently in U.S. Rep. District 12 represented by Kay Granger (R)

The new map will split Parker County into Dist. 12 and Dist. 25, which is represented by Roger Williams (R).

On the new map, Aledo will remain in Dist. 12, as will about the southern two-thirds of Annetta, Annetta South, Hudson Oaks, the western portion of Annetta North, and most of Weatherford.

Dist. 25 will take in most of Willow Park and the eastern portion of Annetta North.

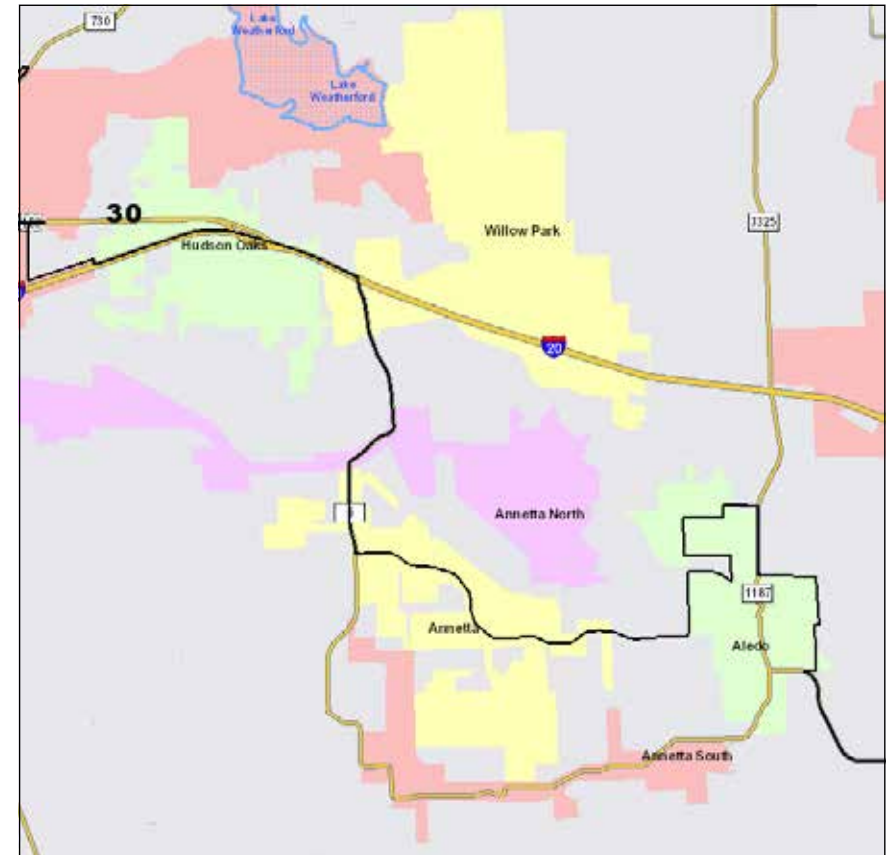
## Good or Bad?

Whether the new alignments are advantageous to Parker County remains to be seen. Certainly, when it comes time to vote in 2022, there will be some confusion as to who will be your representative. There are zoom-able maps at <https://dvr.capitol.texas.gov/> that voters can use to see where their residence falls.

One side of the equation is that the county could lose its united voice on important matters before the state legislature or Congress.

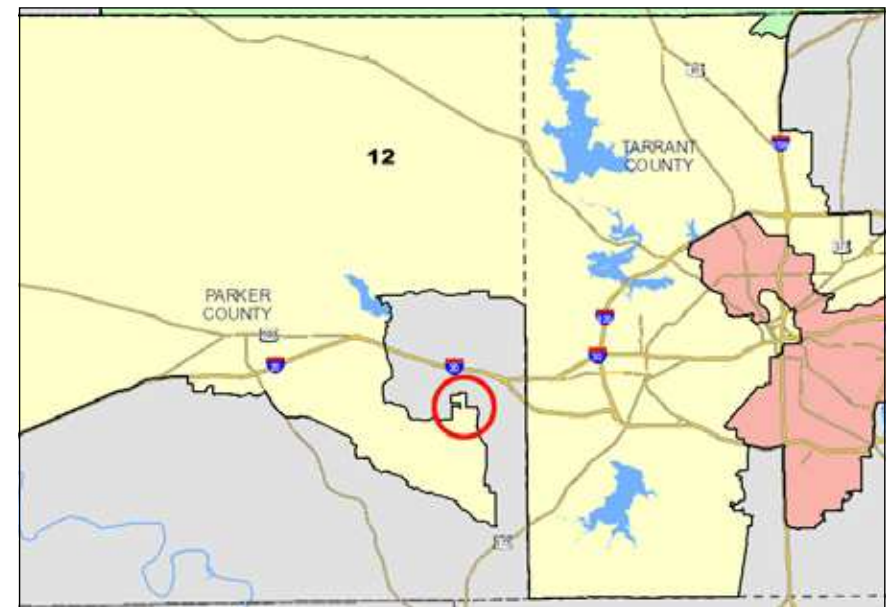
State Rep. King had a more positive view.

“Now we have two state senators and congressional representative instead of one,” he explained, which could increase the impact the county has.



CAPITOL.TEXAS.GOV

**This map shows up-close how State Senate Districts 10 and 30 wind through east Parker county. The line divides the cities of Aledo, Annetta, Annetta North, Hudson Oaks, and a portion of Willow Park.**



CAPITOL.TEXAS.GOV

**The City of Aledo (circled) was included in the new map of US-12, but Willow Park was carved out into US-25.**